

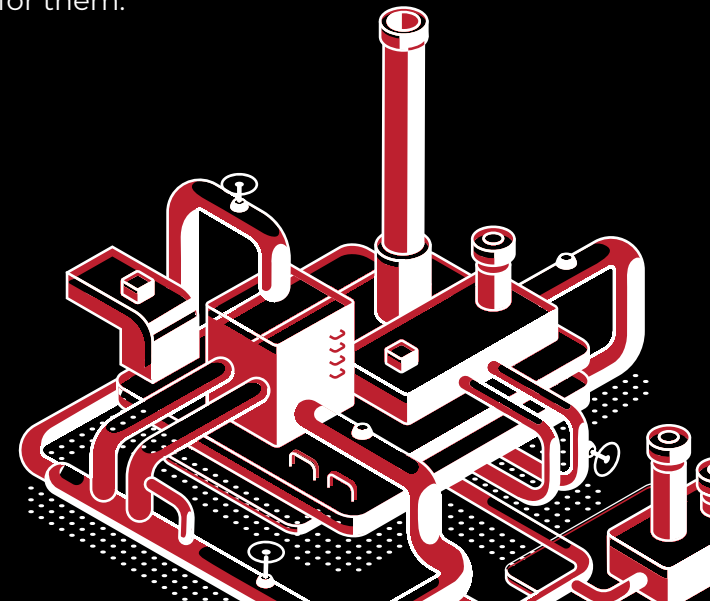


BRAND GUIDE

The ACCURATE project is funded by the European Union, under Grant Agreement number 101138269. Views and opinions expressed are however those of the author(s) only and do not necessarily reflect those of the European Union or the European Health and Digital Executive Agency. Neither the European Union nor the granting authority can be held responsible for them.



**Funded by
the European Union**



Contact

accurateproject.eu

Table of contents

3. Logo

7. Colour

8. Typography

10. Visuals

12. Incorrect Usage

Logo

Full colour



Inverted



Full colour landscape



Inverted landscape



Full colour portrait



Inverted portrait



Orientation

Landscape



Portrait



Colour versions

The ACCURATE logo can be presented in two different colour versions as shown on this page.

The preferred version is the full-colour logo. If the background is a dark colour, the reverse logo must be used to ensure proper readability.

Full colour logo



Black logo



Reversed logo



Reversed logo



Specifications

Minimum size

A minimum size has been carefully established to ensure that the logo is reproduced correctly, even at small sizes. When displayed at minimum size, the logo still has clear legibility.

The logo must never be smaller than the smallest size specified.

Print



2 cm

Web



55 px

MINIMUM SIZE

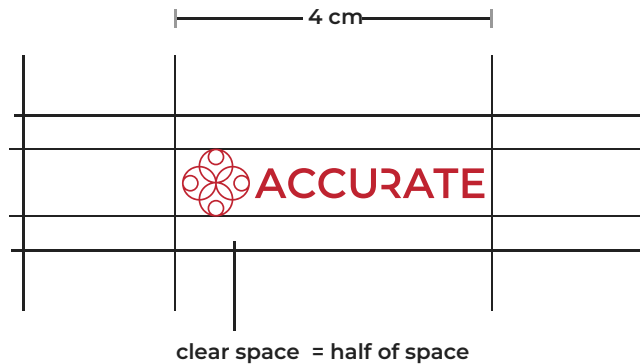
To avoid distortion of the logo, its minimum length **should not be less than 1.5 cm.**

Clear space

Clear space has been established to ensure visibility and impact of the logo.

Maintaining a clear zone between the logo and other graphic elements such as type, images and other logos ensures that the logo always appears unobstructed and distinctly separate from any other graphic elements.

If possible, allow even more space around the logo than required by the minimum indicated.



Colours

The colors are specified for offset printing on white paper (CMYK & PANTONE) and for use on screen and web (RGB & HEX).

Primary colours

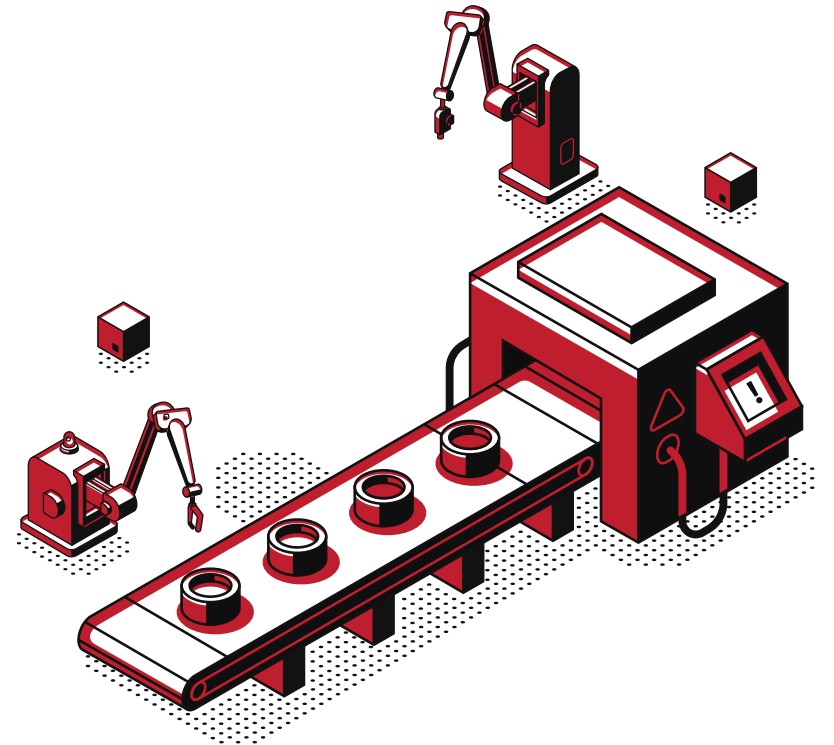


RGB: 191/35/48

CMYK: 18/99/89/7

HEX: #BF2330

PANTONE 186 C



Montserrat

Primary typeface

The primary typeface is Montserrat. It should be used in all communication and dissemination activities, materials and channels, e.g., in Word documents, PowerPoint presentations or Roll-ups.

Montserrat Regular

Lorem ipsum dolor sit amet, consectetur adipiscing elit. Aenean commodo ligula eget dolor. Aenean massa. Cum sociis natoque penatibus et magnis dis parturient montes, nascetur ridiculus mus. Donec quam felis, ultricies nec, pellentesque eu, pretium quis, sem. Nulla consequat massa quis enim. Donec pede justo, fringilla vel, aliquet nec, vulputate eget, arcu. In enim justo, rhoncus ut, imperdiet a, venenatis vitae, justo. Nullam dictum felis eu pede mollis pretium. Integer tincidunt. Cras dapibus. Vivamus elementum semper nisi. Aenean vulputate eleifend tellus. Aenean leo ligula, porttitor eu, consequat vitae, eleifend ac, enim.

Montserrat Medium

Lorem ipsum dolor sit amet, consectetur adipiscing elit. Aenean commodo ligula eget dolor. Aenean massa. Cum sociis natoque penatibus et magnis dis parturient montes, nascetur ridiculus mus. Donec quam felis, ultricies nec, pellentesque eu, pretium quis, sem. Nulla consequat massa quis enim. Donec pede justo, fringilla vel, aliquet nec, vulputate eget, arcu. In enim justo, rhoncus ut, imperdiet a, venenatis vitae, justo. Nullam dictum felis eu pede mollis pretium. Integer tincidunt. Cras dapibus. Vivamus elementum semper nisi. Aenean vulputate eleifend tellus. Aenean leo ligula, porttitor eu, consequat vitae, eleifend ac, enim.

Montserrat Semi Bold

Lorem ipsum dolor sit amet, consectetur adipiscing elit. Aenean commodo ligula eget dolor. Aenean massa. Cum sociis natoque penatibus et magnis dis parturient montes, nascetur ridiculus mus. Donec quam felis, ultricies nec, pellentesque eu, pretium quis, sem. Nulla consequat massa quis enim. Donec pede justo, fringilla vel, aliquet nec, vulputate eget, arcu. In enim justo, rhoncus ut, imperdiet a, venenatis vitae, justo. Nullam dictum felis eu pede mollis pretium. Integer tincidunt. Cras dapibus. Vivamus elementum semper nisi. Aenean vulputate eleifend tellus. Aenean leo ligula, porttitor eu, consequat vitae, eleifend ac, enim.

ABCDEFGHIJKLMNOPQRSTUVWXYZ
abcdefghijklmnopqrstuvwxyz

ABCDEFGHIJKLMNOPQRSTUVWXYZ
abcdefghijklmnopqrstuvwxyz

BEBAS NEUE

Secondary typeface

The secondary typeface is Bebas Neue. It can be used in all communication and dissemination activities, materials and channels, e.g., in Website, Word documents, PowerPoint presentations or Roll-ups.

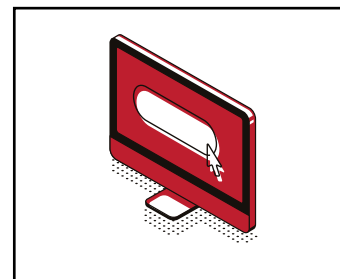
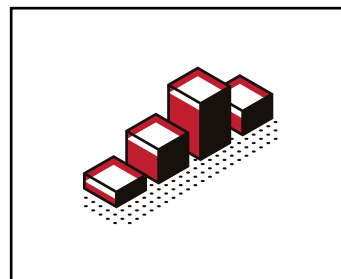
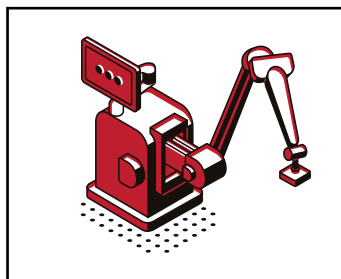
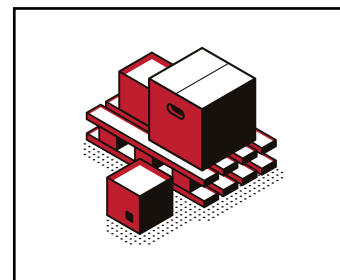
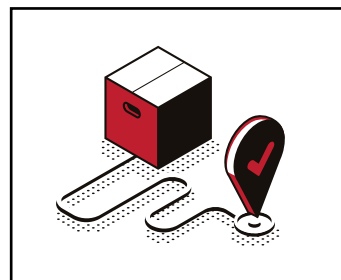
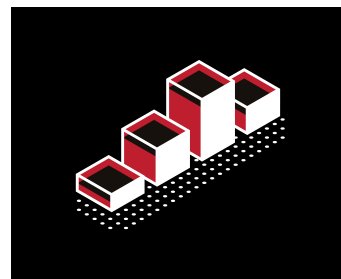
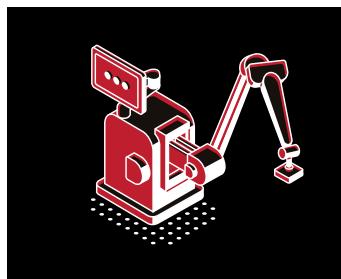
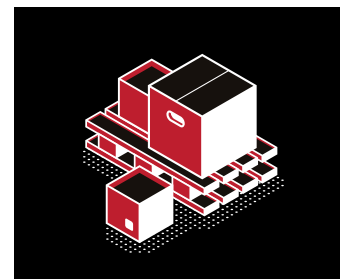
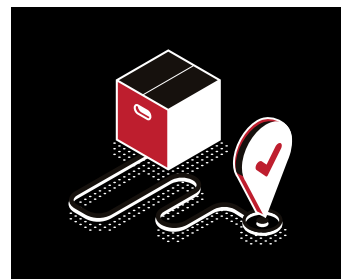
BEBAS NEUE BOLD

LOREM IPSUM DOLOR SIT AMET, CONSECTETUER ADIPISCING ELIT, SED DIAM
NONUMMY NIBH EUISMOD TINCIDUNT UT LAOREET DOLORE MAGNA ALIQUAM
ERAT VOLUTPAT. UT WISI ENIM AD MINIM VENIAM, QUIS NOSTRUD EXERCITATION
ULLAMCORPER SUSCIPIT LOBORTIS NISL UT ALIQUIP EX EA COMMODO
CONSEQUAT. DUIS AUTEM VEL EUM IRIURE DOLOR IN HENDRERIT IN VULPUTATE
VELIT ESSE MOLESTIE CONSEQUAT, VEL ILLUM DOLORE EU FEUGIAT NULLA
FACILISIS AT VERO EROS ET ACCUMSAN ET IUSTO ODIO DIGNISSIM QUI BLANDIT
PRAESENT LUPTATUM ZZRIL DELENIT AUGUE DUIS DOLORE TE FEUGAIT NULLA
FACILISI. LOREM IPSUM DOLOR SIT AMET, CONSECTETUER ADIPISCING

A B C D E F G H I J K L M N
O P Q R S T U V W X Y Z

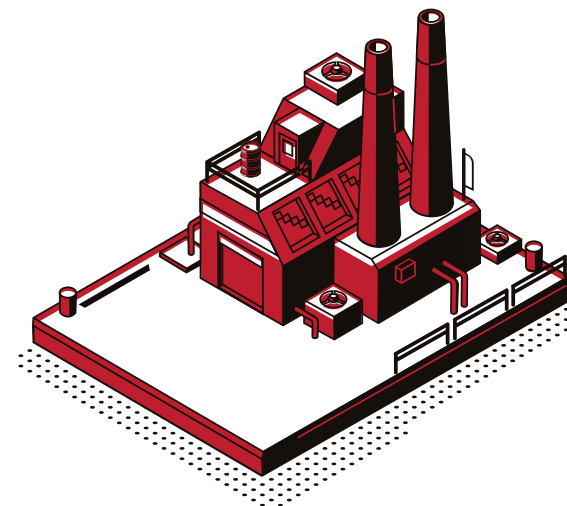
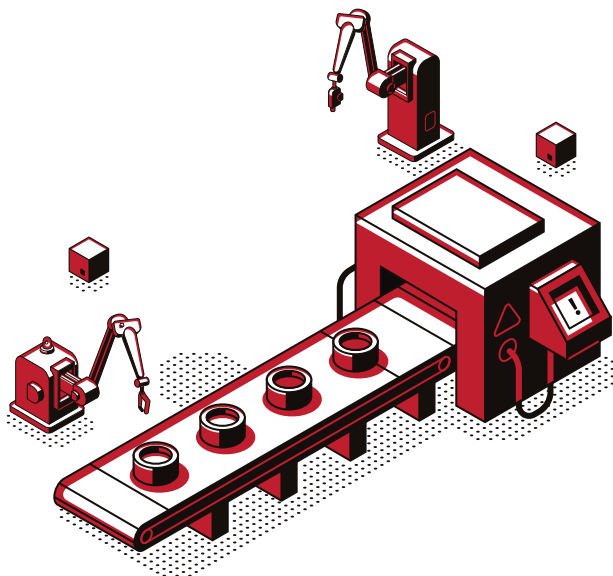
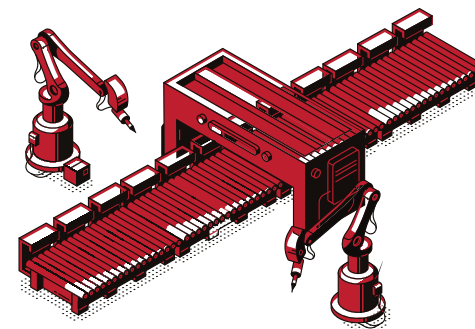
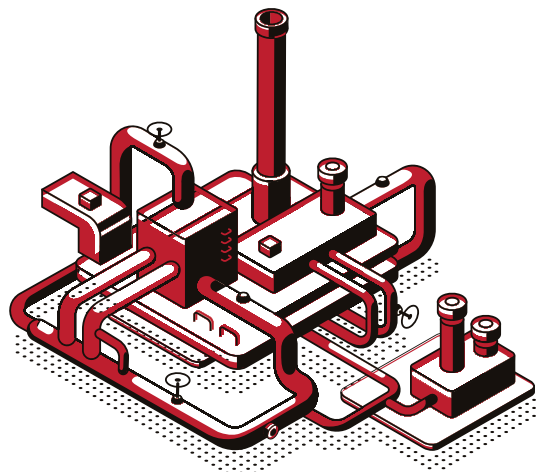
Visuals →

The visuals can be used as shown here.



Visuals →

The visuals can be used as shown here or only in parts.



Do not squeeze or stretch the logo.



Do not rotate or invert the logo.



Do not outline the logo or change its colors.



Do not use effects such as shadows or gradients.



Do not change the position of the symbol and **do not** use the font without the symbol or vice versa.

